



May 2, 2020

Dear Friends of Journey Home Hospice,

Thank you for your interest in supporting our mission to provide 24/7 hospice palliative care for homeless individuals. Journey Home Hospice is the first hospice in Toronto to offer service to the more than 8,000 men and women who find themselves without homes or shelter on any given night. We truly believe that all people deserve and should have access to comprehensive care, particularly at end of life.

The attached capital campaign booklet outlines our vision of expanding our current four-bed pilot site to 10 beds, more than doubling our ability to offer dignity, compassion and care for people most in need.

When we originally envisioned this expansion project, we had a capital budget of \$2 million to truly transform our existing and expanded spaces to provide an oasis of peace for individuals who have rarely experienced kindness or appropriate care during their lives. Due to the COVID-19 pandemic, and the associated economic impacts in Canada, our team cut many of the planned expenses to a total of \$1.25 million, representing only our most basic needs for infrastructure and minimal furnishings. We appreciate that pledges towards this project represent a significant commitment from our donors in a time of economic uncertainty and we did not want to sideline the project at a time when there is more capacity needed to address the needs of the homeless population in the Toronto area.

We have secured operational funding from the Ministry of Health and we are confident that with your help on our capital campaign, we will have created a sustainable model for care and service now and into the future. In addition, our charitable partner, the Saint Elizabeth Foundation, covers all leadership and administrative expenses for Journey Home Hospice, ensuring that every dollar pledged to our capital campaign or throughout the year benefits patients and families.

We invite you to review the capital campaign materials and contact us with any questions or to make your gift. Should you be interested in a donation or naming opportunity not specified in the capital campaign package, we would be happy to work with you to create a custom package that suits your need. All donations to Journey Home Hospice will be receipted by the Saint Elizabeth Foundation (charitable registration number 88472-6753-RR0001).

Thank you for your consideration and your demonstrable compassion for people most in need at end of life.

Sincerely,

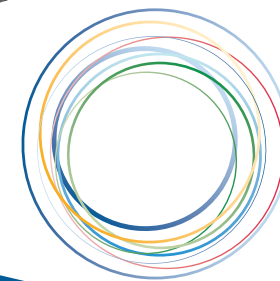
Fr. Dr. Matthew Durham, DMin
Executive Director, Hospice Palliative Care & Community Development
Saint Elizabeth Foundation
M. 519.995.8554



Living on the streets is hard.

***Dying there is
even harder.***

CAPITAL CAMPAIGN 2020



**JOURNEY
HOME
HOSPICE**



Our patients stay an average of three months at the end of their lives.

We need YOUR Help!

Where do you go to live your last days if you don't have a home?

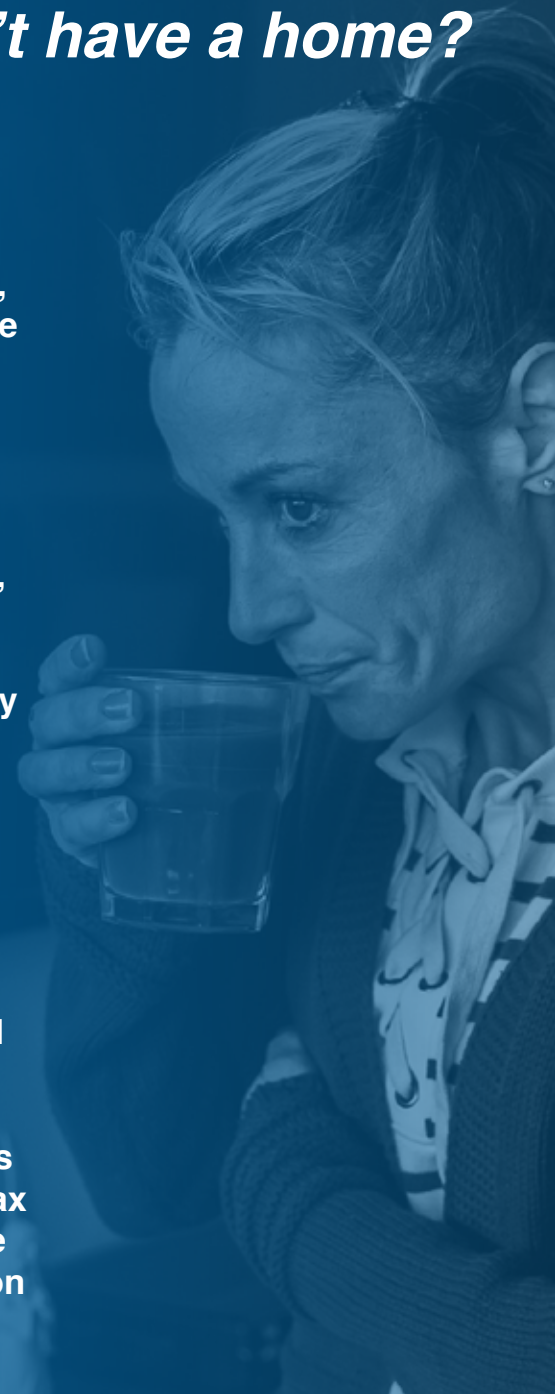
That's the challenge that Journey Home Hospice is working to address.

Launched in 2018, Journey Home Hospice is a partnership involving the Saint Elizabeth Foundation, Inner City Health Associates, Hospice Toronto and the Toronto Central LHIN, as a funding partner. It is a joint passion to improve equitable access to hospice palliative care for Toronto's homeless and vulnerably housed community in a socially innovative way.

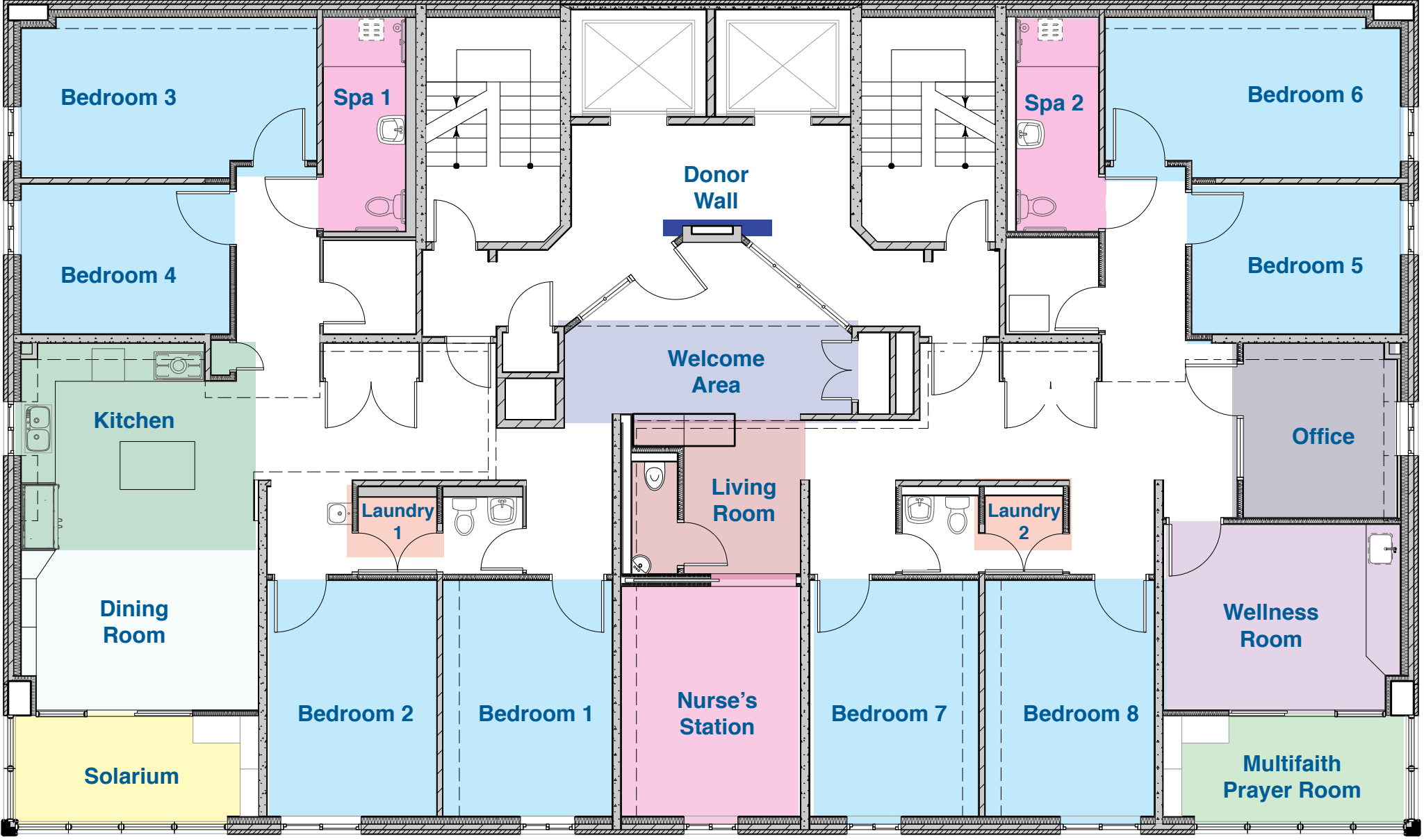
Journey Home Hospice provides our patients and families with 24/7 high quality health care services and a safe, welcoming and caring environment for their end-of-life journey. Our clinical team includes physicians, nurses, personal support workers, social workers, spiritual care providers, and a wonderful group of caring volunteers. We believe in a holistic model of care that addresses pain and symptom management, psychosocial needs, and spiritual care, offered in a flexible, responsive, and respectful setting. Journey Home Hospice is truly a place based in the community, for the community.

We currently have four beds in our downtown Toronto pilot site, hosted by Homes First, and we need your help to create a 10-bed hospice in the next year. We continually measure key indicators in areas such as quality, safety patient satisfaction and system impact to ensure we are achieving our goal of excellence in homeless end-of-life care. When fully operational, Journey Home Hospice also hopes to become a teaching and learning facility for health care providers throughout the country to study the specialized delivery of hospice palliative care to homeless and vulnerably housed individuals.

We need your help to reach our capital campaign goal of \$1.25 million to support patients and families at Journey Home Hospice. All capital campaign donations will be issued a tax receipt through the Saint Elizabeth Foundation and there are a variety of commemorative giving options such as room naming and donor wall recognition opportunities outlined on the following pages.



Expansion Floor Plan



Naming Opportunities

Bedrooms - 8 x \$90,000

| | |
|--------|----------|
| Room 1 | \$90,000 |
| Room 2 | \$90,000 |
| Room 3 | \$90,000 |
| Room 4 | \$90,000 |
| Room 5 | \$90,000 |
| Room 6 | \$90,000 |
| Room 7 | \$90,000 |
| Room 8 | \$90,000 |

Kitchen - \$75,000

Living Room - \$75,000

Dining Room - \$50,000

Multifaith Prayer Room - \$50,000

Nursing Station - \$50,000

Solarium - \$50,000

Welcome Area - \$50,000

Wellness Room - \$30,000

Office - \$20,000

Spa Rooms - 2 x \$10,000

| | |
|-------|----------|
| Spa 1 | \$10,000 |
| Spa 2 | \$10,000 |

Laundry Rooms - 2 x \$5,000

| | |
|-----------|---------|
| Laundry 1 | \$5,000 |
| Laundry 2 | \$5,000 |

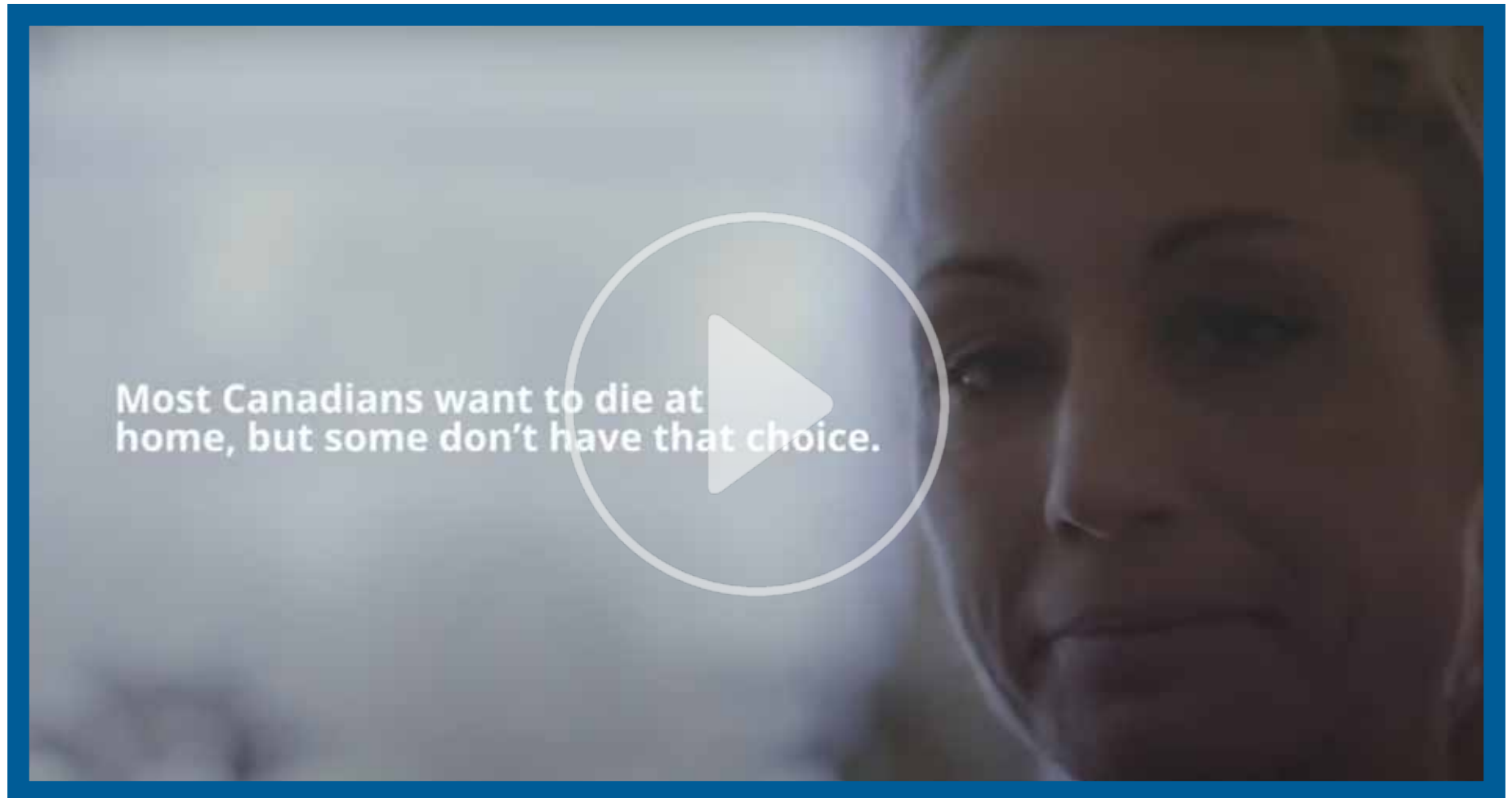
Donor Wall Commemorations

| | |
|-----------------------|---------------------|
| Patron of Hospice | \$20,000 - \$39,999 |
| Benefactor of Hospice | \$10,000 - \$19,999 |
| Friend of Hospice | \$5,000 - \$9,999 |
| Supporter of Hospice | \$1,000 - \$4,999 |



Program Impacts: Nicole's Story

Every day, Journey Home Hospice makes a difference in the lives of homeless patients and their loved ones by providing 24/7 residential hospice palliative care. To learn more about how this mission impacts our patients, we invite you to watch Nicole's story...



Contact Us Today to Make Your Gift



**JOURNEY
HOME
HOSPICE**

Please contact us about giving
to Journey Home Hospice:

Rev. Dr. Matthew Durham, DMin
Executive Director Hospice Palliative Care
& Community Development
MatthewDurham@sehc.com | 519.995.8554